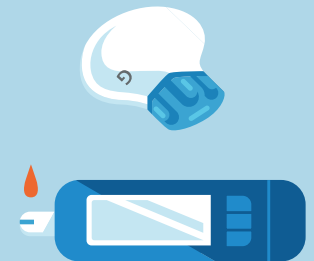


3 STEPS TO SUCCESS

GUARDIAN™ SENSOR 3

1 START YOUR SENSOR WHEN YOU START YOUR DAY

Always have your blood glucose (BG) meter nearby on the first day. You may receive more calibration requests on the first day.



BE READY TO CALIBRATE: SENSOR WARM-UP PERIOD MAY VARY FROM 40 MIN UP TO 120 MIN



CALIBRATE BEFORE MEALS & AT BEDTIME 2

Calibrate your sensor with the blood glucose (BG) you take for meals before delivering a meal bolus. Calibrate an hour before bedtime to help avoid nighttime alerts.

3 FOLLOW PUMP INSTRUCTIONS

Calibration required the alerts are for continuation of sensor data and to improve sensor accuracy. Just remember to read and follow the pump screens.



For more tips and tricks, refer to back of this document ►

Medtronic

3 FREQUENTLY ASKED QUESTIONS ABOUT GUARDIAN™ SENSOR 3

Q1: When should I calibrate?

We recommend that you calibrate your sensor with the BG you take for meals before delivery of a meal bolus and an hour before going to bed. Spreading out your sensor calibrations over the day will help optimise sensor performance and minimise alerts. You can calibrate anytime. However, calibrating with two or three trend arrows may temporarily decrease accuracy until the next calibration. Therefore we recommend to calibrate when your glucose is stable and you will not see two or three trend arrows on the display.

Q2: How long does my sensor last?

While the sensor lasts up to 168 hours (7 days), if your sensor is not performing well, you may receive a Change Sensor alert. This is to ensure you are only provided with safe, reliable and accurate sensor glucose values.

Q3: Why am I being asked to calibrate more frequently?

The Guardian™ Link 3 transmitter improves sensor reliability by using intelligent diagnostics to monitor the health of the sensor. If it detects an issue with sensor health it may request additional calibrations to improve overall accuracy and maintain sensor life up to 7 days.

Have More Questions? Contact our 24-hour HelpLine
01923 205167 (UK) or **015111444** (Republic of Ireland)

For a listing of indications, contraindications, precautions, warnings, and potential adverse events, please refer to the Instructions for Use.

Medtronic Limited
Building 9, Croxley Park
Watford
Hertfordshire
WD18 8WW
Diabetes Helpline: +44 (0)1923 205167
medtronic-diabetes.co.uk

Medtronic Ireland Limited
Block 3090-3094, Lake Drive
CityWest Business Campus
Dublin
DN24 XN47
Diabetes Helpline: +353 (0) 15111444
medtronic-diabetes.ie

© 2019 Medtronic. All rights reserved. Medtronic, Medtronic logo and Further, Together are trademarks of Medtronic. All other brands are trademarks of a Medtronic company. UC202005078EN - Date of Prep: September 2019

Medtronic