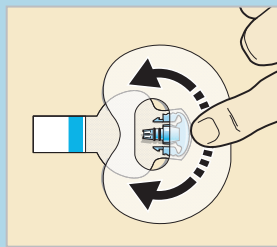


TIPS & TRICKS WHEN USING THE MINIMED™ 780G system



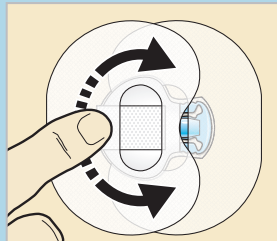
SENSOR TAPING GUARDIAN™ SENSOR 3

1st adhesive on the sensor



Remove the liners and apply the tape. The wide part of the tape covers half of the sensor base. Smooth the tape over the skin.

2nd adhesive on the transmitter



To apply the 2nd tape, remove the liners and rotate the 2nd tape over the transmitter. Smooth the tape.

It is very helpful to remember the order of these four steps when changing the sensor:

1. Insert the sensor
2. Apply the first Oval tape
3. Connect the transmitter
4. Apply a second Oval tape

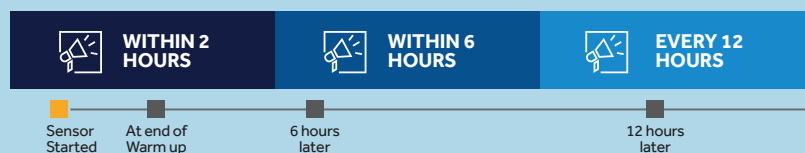
Properly applying the Oval tape is key to ensuring your success with the sensor. The Oval tape helps to secure it from movements that can cause it to be pulled out.

CALIBRATION DAY 1

You might want to insert a new sensor in the morning.

- First calibration: within 2 hours after the sensor insertion.
- Second calibration: within 6 hours after your first calibration

After that you must calibrate within the next 12 hours.



DAY 2-7

The sensor must be calibrated at a minimum of every 12 hours throughout the life of the sensor.

We recommend that you calibrate 2-3 times a day.



Each time you perform and confirm a BG it will be considered a calibration.

You might sometimes also be prompted to do an extra calibration that will help ensure sensor accuracy.

KEY ELEMENTS:

We recommend calibrating **2-3 TIMES A DAY**

Best times to calibrate

BEFORE MEALS



**BEFORE BEDTIME
TO AVOID ALERTS
DURING THE NIGHT**



Note: If your calibration is not accepted, wait a minimum 15 minutes. If you receive a new calibration not accepted alert, a change sensor alert occurs.

MINIMED™ 780G SYSTEM – SMARTGUARD™ FEATURE

BOLUS



Bolus 10 to 20 min.^{1,2} before meals if possible



Count your carbohydrates as correctly as possible



Use a correction bolus if the pump recommends one



Do not enter fake carbohydrates in order to lower your glucose level

TEMP TARGET

Use the Temp Target of 8.3mmol/L when doing sport or in other situations where you expect your SG values will drop. The Temp Target can be activated for maximum 24 hours.



SMARTGUARD™ FEATURE SCREENS

BLUE SHIELD: SmartGuard™ feature



RED BANNER: Insulin delivery is suspended



READ AND RESPOND

When the pump requires an action to stay in the SmartGuard™ feature, it provides a notification of any required actions and the time remaining before an exit will occur. During this time it delivers insulin based on insulin delivery history and not SG readings. You will have a maximum of 4 hours to respond before the system exits to Manual Mode.

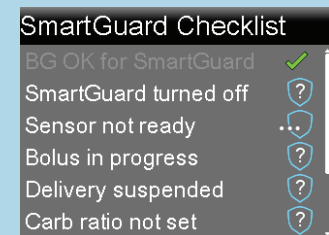
No worries, just remember these two easy steps:



- 1) Read the pump screen.
- 2) Respond to the action needed.



Note: Check the SmartGuard™ checklist screen. It shows the requirements needed to start or continue using the SmartGuard™ feature.



If you have any diabetes related questions, please contact your local diabetes team.
If you have questions related to technical issues with your pump please contact our WeCare team.
Here for your diabetes journey.

Medtronic Limited
Building 9, Croxley Park
Watford, Hertfordshire
WD18 8WW
Diabetes Helpline: +44 (0) 1923 205167
medtronic-diabetes.co.uk

Medtronic Ireland Limited
Block 3090-3094, Lake Drive Citywest
Business Campus
Dublin
DN24 XN47
Diabetes Helpline: +353 (0) 15111499
medtronic-diabetes.ie

1. Slattery, D. et al. Optimal prandial timing of bolus insulin in diabetes management: a review. *Diabet Med.* 2018 35(3): 306-316.
2. Introduction to insulin pump therapy handbook. Edinburgh Centre for Endocrinology and Diabetes <http://www.edinburghdiabetes.com/paeds-hb>. Accessed July 2020.

See the device manual for detailed information regarding the instructions for use, indications, contraindications, warnings, precautions, and potential adverse events. For further information, contact your local Medtronic representative.

UC202103666 EN © 2020 Medtronic. All rights reserved.
Printed in Europe.

Medtronic
Further, Together